



House - Terraced

**67, WAKEMAN ROAD,
NW10 5BJ**

Per Week
£6,750

Available: 1st April 2026

FEATURES



Huddletons

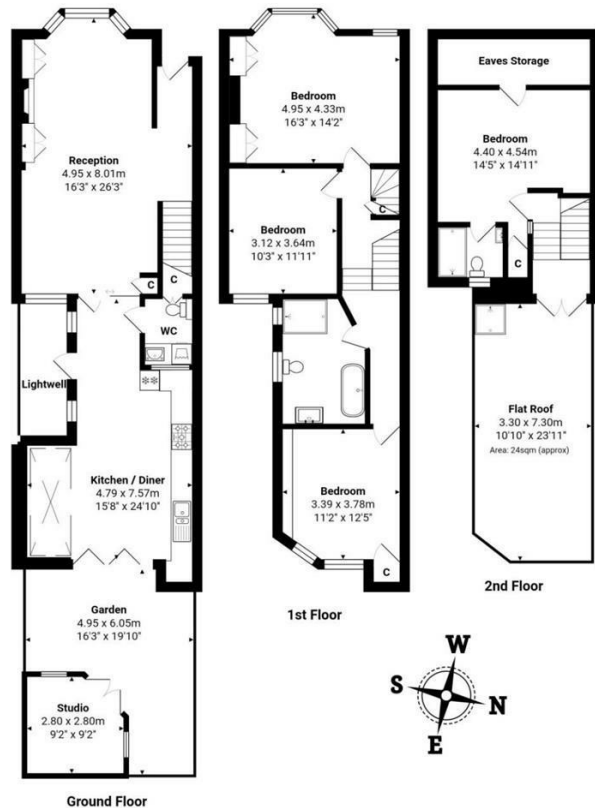
4 Bedroom House - Terraced located in London

A Stunning Extended Four-Bedroom Family Home with Garden Studio, Close to Transport and Amenities

This beautifully extended family home combines period charm with modern living. Boasting four double bedrooms, flexible living space, and a garden studio, it's ideal for a growing family.

The ground floor features a spacious double reception room with high ceilings, built-in storage, a bookcase, and a feature fireplace with a log burner. A wide opening leads seamlessly into the kitchen breakfast room, complete with a separate utility room and guest WC. This space is perfect for entertaining, with the option to create a fully open-plan layout. French doors from the kitchen lead out to the garden, which includes a summer house/studio with electricity and lighting – ideal for a home office.

On the first floor, there are three generously sized double bedrooms and a family bathroom with a separate bathtub and shower. The loft has been converted to create a fourth double bedroom with an en-suite shower room and ample eaves storage.



Total Area: 165.8 m² ... 1784 ft² (excluding garden, lightwell, eaves storage, flat roof)
All measurements are approximate and for display purposes only

Call us on

0207 205 4411

info@huddletons.com

http://www.huddletons.com

Council Tax Band

Energy Efficiency Rating		Current	Potential
<i>Very energy efficient - lower running costs</i>			
(92 plus) A			
(81-91) B			
(69-80) C			
(55-68) D			
(39-54) E			
(21-38) F			
(1-20) G			
<i>Not energy efficient - higher running costs</i>			
England & Wales		EU Directive	
		2002/91/EC	

Agents Note: Whilst every care has been taken to prepare these particulars, they are for guidance purposes only. All measurements are approximate and are for general guidance purposes only and whilst every care has been taken to ensure their accuracy, they should not be relied upon and potential buyers are advised to recheck the measurements.

Huddletons